

PRIMEAT

“PREMIUM MEAT SUPPLIER”



 CALL FOR MORE INFORMATION

+92723610500

FOLLOW US ON    

WWW.PRIMEAT.NET



SLAUGHTERING CAPACITY

1 x Beef Cattle line
30–35 animals/hr/line
(250 animals/Shift)

1 x Mutton line
120 heads/hr
(960 animals/Shift)

Our Slaughtering lines have been built by industry experts using top quality materials that adhere to the latest international standards. This along with other nuances ensure high levels of hygiene with a seamless slaughtering operation.

LAIRAGE/HOLDING AREA

- 7 Acres of land
- 5 Cattle sheds (1500 storage)
- 3 Goat/Sheep sheds (2400 heads)

5 DAYS OF HOLDING CAPACITY FOR 1500 CATTLE.

Our Sheds are built with an industry-first, modern cutting-edge design that incorporates a fully functional 250 KW solar panel system. This efficient layout designed by a team of highly qualified architects ensures maximum utilisation of space while also simultaneously enabling us to produce our own in-house renewable energy.

The animals are therefore provided with a stress-free environment while also doubling our production of environment-friendly electricity which is supported by reliable backup generators.

REFRIGERATION SYSTEMS:

Our lineup of Refrigeration systems include a combination of:

- 1)Freezers (Upto -25°c)
- 2)Chillers (4°c to -4°c)
- 3)Blast freezers (-45°c)

These units have been built to exclusively cater to meat products and their characteristics. All parts and internals of these refrigeration systems have been sourced from Italy.

WHY CHOOSE US

Primeat, since its inception, has operated with the belief to be a step above the rest in the meat trade. Every decision our team makes is with that goal in mind.

Our production plant, located in Ghotki Sindh, is strategically placed at the centre of the country allowing for easy access to all major airports of Pakistan. We remain equidistant to both major business hubs of Karachi and Lahore for the use of both Airports and the port facility in Karachi. Our nearest airport is the Multan International airport situated three and a half hours away with an abundance of flights and cargo space to the Middle East region with an average of 6 flights per day.

As most meat producers of Pakistan face issues of cargo space which delay orders and damage quality. We are protected from such issues as all major international airports are easily accessible to us.

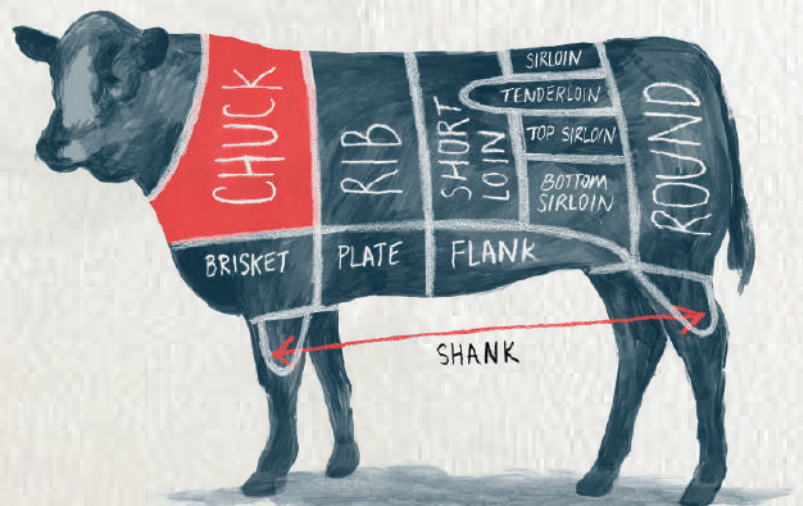
Primeat also has an upper hand when it comes to animal sourcing. As our location is at the border of Sindh and Punjab, we have easy and direct access to farmers which enable us to source organically viable animals that have not been subjected to cruelty while being transported.

Animals that are not subjected to stress/injury yield better quality meat for the end consumer.

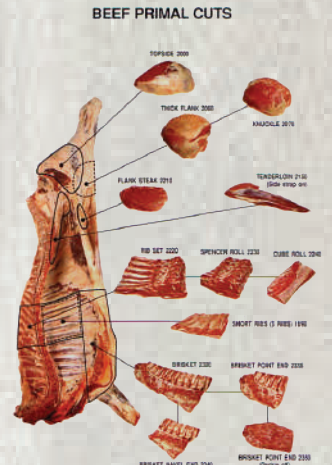
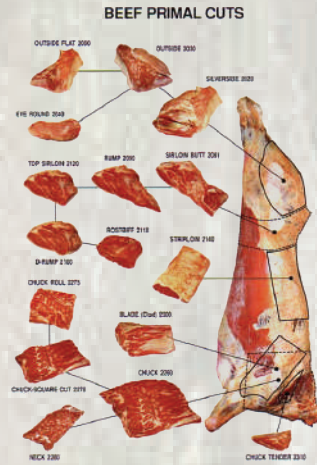
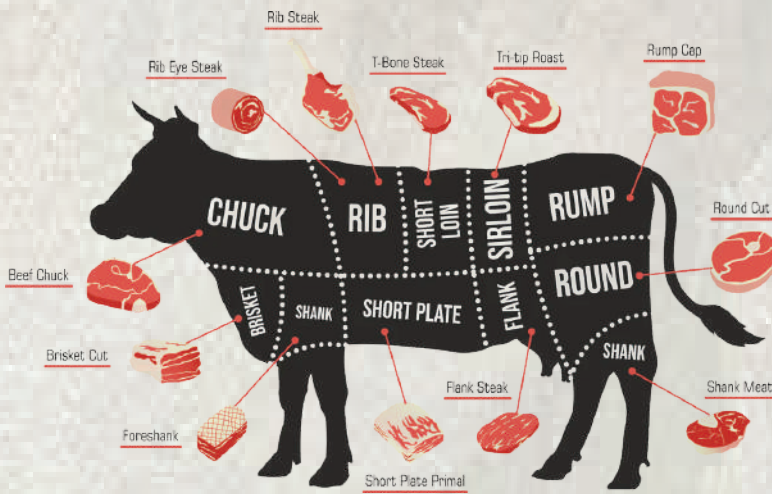
Our vast portfolio of land at the plant and in surrounding areas allows us to hold a huge inventory of livestock.

The ability to hold enough animals to have an uninterrupted supply chain when it comes to orders is a very crucial aspect which a lot of meat companies in Pakistan struggle with. We are able to overcome this issue by being able to hold several days worth of supply of animals so no order remains unfulfilled and every shipment is on time.

Lastly, our most redeemable factor is the team we have at Primeat. It consists of a culmination of young energetic talent which is always going out of its way to innovate in their respective niches while also holding the highest level of professionalism.



WE OFFER A WIDE ARRAY OF MEAT RELATED PRODUCTS



PRODUCTION PLANT CERTIFICATIONS



CONTACT US!

PRIMEAT, JAM FLOUR MILL ROAD, ADILPUR, DISTRICT GHOTKI, PAKISTAN.

+92723610500

WWW.PRIMEAT.NET